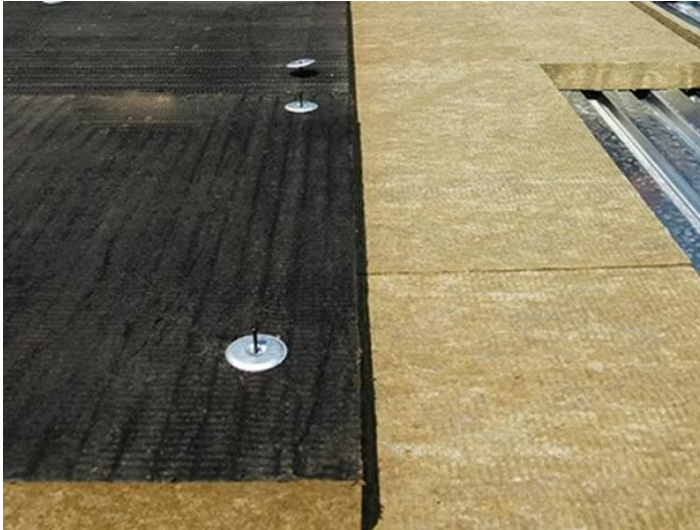


CCEWOOL® Rock Wool Board HD



CCEWOOL® Rock Wool Board HD serves as an ideal substrate for mechanically fastened membrane systems, offering excellent soundproofing and thermal insulation performance. It can be used as the thermal base layer in soundproofing assemblies or combined with other roofing insulation materials to form the top layer of hybrid roof assemblies. To meet diverse application needs, CCEWOOL® Rock

Wool Board HD can be coated with fiberglass or asphalt to enhance the product's functionality and durability.

CCEWOOL® Rock Wool Board HD is the ideal insulation solution for modern low-slope roofs, providing comprehensive protection and improved energy efficiency with its outstanding soundproofing, fire resistance, and durability.

Characteristics:

Non-Combustible;

Non-Bending or Curling;

Dimensional Stability;

High Impact Resistance;

Noise Reduction and Sound Absorption;

Eco-Friendly Manufacturing.

Applications:

Roofing insulation systems.



TDS

CCEWOOL® Rock Wool Board HD			
Density	Top Layer - 13.75 lb/ft ³ (220 kg/m ³)		
	Bottom Layer - 10 lb/ft ³ (160 kg/m ³)		
	Bottom Layer - 9.36 lb/ft ³ (150 kg/m ³) (for thicknesses >2.5" (63.5 mm))		
Dimensional stability	Linear Shrinkage - 0.71% @ 1200°F (650°C)		
Dimensions	48" x 48" (1219 mm x 1219 mm)		
Thickness	Product available in 2" – 6" (50.8mm – 152.4 mm)		
Reaction to fire	Class A Non-Combustible Flame spread index = 0 ; Smoke developed index = 0		
Thermal resistance	Mean Temperature	R-Value	RSI Value
	75°F (24°C)	3.8 hr.ft ² .F/Btu	0.68 m ² K/W
	25°F (-4°C)	4.3 hr.ft ² .F/Btu	0.74 m ² K/W
	40°F (4°C)	4.2 hr.ft ² .F/Btu	0.72 m ² K/W
	110°F (43°C)	3.6 hr.ft ² .F/Btu	0.64 m ² K/W
Reaction to moisture	Moisture Sorption - 0.15%		
Compressive strength	Top Layer - 20 psi (140 kPa) @ 10%, 37 psi (250 kPa) @ 25%		
	Entire Board - 11 psi (75 kPa) @ 10%, 15 psi (105 kPa) @ 25%		
	Point Load @ 5 mm Compression - 30 psi (205 kPa)		
Corrosion Resistance	No corrosion		

