

## CCEWOOL® Rock Wool Board 80



CCEWOOL® Rock Wool Board 80 is a high-performance rigid stone wool insulation board designed for exterior continuous insulation systems in both residential and commercial buildings. It offers exceptional thermal, fire-resistant, and acoustic performance. This product is fire-resistant and does not produce smoke or propagate flames, providing a critical line of defense that keeps occupants safe and

reduces property damage during a fire. It helps delay the spread of fire and offers valuable extra time for evacuation and firefighting efforts, minimizing damage.

CCEWOOL® Rock Wool Board 80 integrates thermal insulation, fire safety, and soundproofing into a comprehensive solution that ensures safe, comfortable, and energy-efficient buildings.

### **Characteristics:**

Easy to Cut;

Non-Combustible;

Excellent Sound Absorption;

Good Vapor Permeability;

Durable and Corrosion-Resistant;

Low Moisture Absorption;

Chemically Inert;

Water-Repellent;

Eco-Friendly Manufacturing.



**Applications:**

- Non-Structural Thermal Insulation;
- Single- and Three-Coat Insulated Stucco Cladding;
- Basement Continuous Insulation;
- Exterior Perimeter Insulation around Foundation;
- Under Flat Concrete Slab Insulation;
- Residential Wood-Framed Cathedral Ceiling Insulation.

**TDS**

<b>CCEWOOL® Rock Wool Board 80</b>	
Density	8 lb/ft <sup>3</sup> (128 kg/m <sup>3</sup> )
Dimensions	1" to 5": 24" x 48" (610 mm x 1219 mm)
	1.5", 2.5": 48" x 72" (1219 mm x 1829 mm)
	1.25", 1.5", 2", 2.5", 3": 48" x 96" (1219 mm x 2438 mm)
Thickness	1" (25.4 mm)
	1.25" (31.8 mm)
	1.5" (38.1 mm)
	2" (50.8 mm)
	2.5" (63.5 mm)
	3" (76.2 mm)
	3.5" (88.9 mm)
	4" (101.6 mm)
Reaction to fire	Class A Non-Combustible
	Flame spread index = 0 ; Smoke developed index = 0
Thermal resistance	R-value / inch @ 75°F - 4.2 hr.ft <sup>2</sup> .F/Btu
Acoustical Performance	ASTM C423: NRC = 0.9
Reaction to moisture	Moisture Sorption - 0.05%
Compressive strength	439 psf (21 kPa) @ 10% compression
	1065 psf (50 kPa) @ 25% compression
Corrosion Resistance	No corrosion

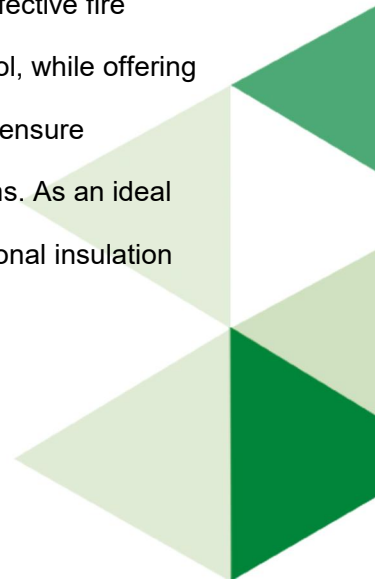
Product Range			
R-value	Thickness (inch)	Width (inch)	Length (inch)
4.2	1	24	48
5.25	1.25	24	48
5.25	1.25	48	96
6.3	1.5	24	48
6.3	1.5	48	72
6.3	1.5	48	96
8.4	2	24	48
8.4	2	48	96
10.5	2.5	24	48
10.5	2.5	48	72
10.5	2.5	48	96
12.6	3	24	48
12.6	3	48	96
14.7	3.5	24	48
16.8	4	24	48

## CCEWOOL® Rock Wool Board 110



CCEWOOL® Rock Wool Board 110 is a high-density, rigid stone wool insulation board with exceptional thermal, moisture-resistant, and vapor-permeable properties, designed for exterior continuous insulation applications. It is non-combustible, providing effective fire protection and moisture control, while offering superior thermal insulation to ensure high-performance wall systems. As an ideal

insulation material for buildings, CCEWOOL® Rock Wool Board 110 can replace traditional insulation



materials, providing more reliable fire and thermal protection, as well as enhancing the drying capacity of the structure.

CCEWOOL® Rock Wool Board 110 integrates high density, thermal insulation, and fire resistance, making it an ideal choice for applications requiring high compressive strength. It not only improves building energy efficiency but also offers long-term protection and comfort, making it a reliable choice for the construction industry.

**Characteristics:**

Vapor Permeability;

Fire Resistance;

Environmental Sustainability;

Moisture Resistance;

Stable R-Value Over Time;

Dimensional Stability;

UV Resistance;

Sound Absorption.

**Applications:**

Exterior Continuous Insulation;

Rainscreen Curtain Wall Systems;

Perimeter Insulation Around Foundations;

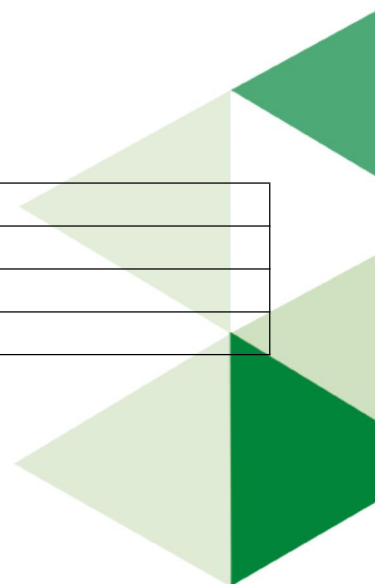
Flat Roof Insulation;

Underfloor Insulation;

Fire Insulation Systems.

**TDS**

<b>CCEWOOL® Rock Wool Board 110</b>	
Density	11 lb/ft <sup>3</sup> (176 kg/m <sup>3</sup> )
Dimensions	1" to 5": 24"x48" (610 mm x 1219 mm)
	1" to 3": 48"x72" (1219 mm x 1829 mm)



Thickness	1" (25.4 mm)							
	1.25" (32 mm)							
	1.5" (38.1 mm)							
	2" (50.8 mm)							
	2.5" (63.5 mm)							
	3" (76.2 mm)							
	4" (101.6 mm)							
	5" (127 mm)							
Reaction to fire	Class A Non-Combustible Flame spread index = 0 ; Smoke developed index = 0							
Thermal resistance	R-value / inch @ 75°F - 4.0 hr.ft <sup>2</sup> .F/Btu							
	RSI value / 25.4 mm @ 24°C - 0.70 m <sup>2</sup> K/W							
Acoustical Performance	Thickness	125 Hz	250 Hz	500 Hz	1000 Hz	2000 Hz	4000 Hz	NRC
	1"	0.13	0.49	0.85	0.89	0.89	0.97	0.8
	2"	0.5	0.71	0.85	0.9	0.96	1.01	0.85
Reaction to moisture	Moisture Sorption - 0.28%							
Compressive strength	584 psf (28 kPa) @ 10% compression							
	1566 psf (75 kPa) @ 25% compression							
Corrosion Resistance	No corrosion							

Product Range			
R-value	Thickness (inch)	Width (inch)	Length (inch)
4	1	24	48
4	1	48	72
5	1.25	24	48
5	1.25	48	72
6	1.5	24	48
6	1.5	48	72
8	2	24	48
8	2	48	72
10	2.5	24	48
10	2.5	48	72
12	3	24	48
12	3	48	72
14	3.5	24	48
16	4	24	48
20	5	24	48

## CCEWOOL® Rock Wool Batt



CCEWOOL® Rock Wool Batt is a high-performance semi-rigid stone wool insulation product specifically designed for new and renovated residential and commercial buildings. It is ideal for wall, ceiling, floor, and attic insulation systems in wood and steel-framed structures. This stone wool batt features unique flexible edges that can be easily compressed during installation, ensuring seamless filling of the

framing cavities while preventing over-compression, thus maintaining excellent R-value performance.

The product is non-combustible and fire-resistant, and even when directly exposed to fire, it will not produce toxic smoke or contribute to flame spread. Additionally, it has outstanding moisture resistance, water-repellency, and sound absorption properties, making it an ideal choice for enhancing energy efficiency and creating a healthy indoor environment.

CCEWOOL® Rock Wool Batt combines high-efficiency thermal insulation, fire protection, and environmental sustainability, making it an excellent solution for various building needs and offering a safe, comfortable, and sustainable solution for construction.

### **Characteristics:**

Vapor Permeability;

Fire Protection;

Environmental Sustainability;

Moisture Resistance;

Stable R-Value;

Dimensional Stability;

Sound Absorption.



**Applications:**

Exterior Insulation for Wood and Steel-Framed Walls;

Insulation and Soundproofing for Bare Floors and Crawl Spaces;

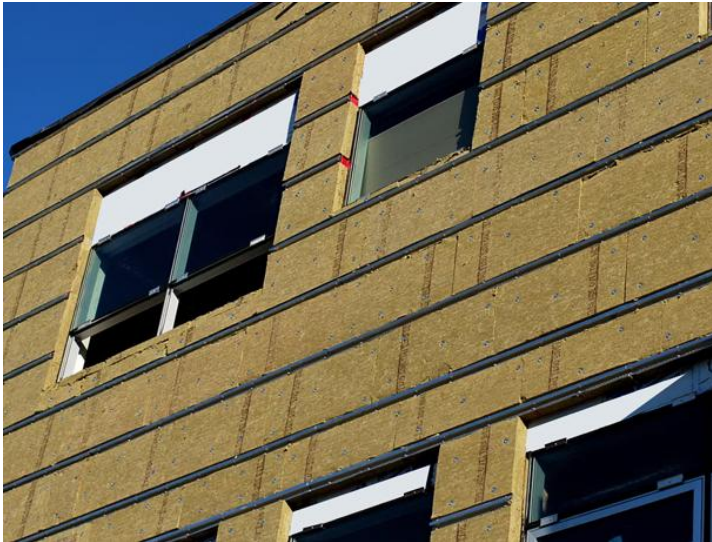
Attic and Ceiling Insulation Systems.

**TDS**

<b>CCEWOOL® Rock Wool Batt</b>	
Density	> 2 lb/ft <sup>3</sup> (>32 kg/m <sup>3</sup> )
Dimensions	Wood Stud 16" (406 mm) on center: 15.25" x 47" (387 mm x 1194 mm)
	Wood Stud 24" (610 mm) on center: 23" x 47" (584 mm x 1194 mm)
	Steel Stud 16" (406 mm) on center: 16.25" x 48" (413 mm x 1219 mm)
	Steel Stud 24" (610 mm) on center: 24.25" x 48" (616 mm x 1219 mm)
Reaction to fire	Class A Non-Combustible
Thermal resistance	Varied from R-10-R38
	R 14 (RSI 2.47) - 3.5" thick (89 mm) R 10 (RSI 1.76) - 2.5" thick (64 mm)
	R 22 (RSI 3.87) - 5.5" thick (140 mm) R 14 (RSI 2.47) - 3.5" thick (89 mm)
	R 24 (RSI 4.23) - 5.5" thick (140 mm) R 22.5 (RSI 3.96) - 6" thick (152 mm)
	R 28 (RSI 4.93) - 7.25" thick (184 mm) R 24 (RSI 4.23) - 6" thick (152 mm)
	R 32 (RSI 5.64) - 8" thick (203 mm)

<b>Product Range</b>			
R-value	Thickness (inch)	Width (inch)	Length (inch)
13	3.5	15.25	47
13	3.5	23	47
15	3.5	15.25	47
15	5.5	23	47
21	5.5	15.25	47
21	5.5	23	47
23	5.5	15.25	47
23	5.5	23	47
30	7.25	15.25	47
30	7.25	23	47

## CCEWOOL® Curtain Wall Insulation Board 40/80



CCEWOOL® Curtain Wall Insulation Board is a high-performance semi-rigid stone wool insulation board designed for curtain wall systems. It offers outstanding fire protection and thermal performance. Its non-combustible properties ensure that it will not produce smoke or contribute to flame spread when exposed to fire, providing reliable safety for buildings. Additionally, this product features moisture

resistance and corrosion protection, ensuring long-term thermal efficiency for wall components.

We offer two specifications to meet different curtain wall design needs:

CCEWOOL® Curtain Wall Insulation Board 40: With a minimum nominal density of 4 PCF, it is suitable for standard curtain wall insulation needs and meets relevant insulation standards.

CCEWOOL® Curtain Wall Insulation Board 80: With a minimum nominal density of 8 PCF, it provides higher density and compressive strength, making it suitable for curtain wall systems with higher performance requirements.

Choosing the appropriate product depends on the specified perimeter fire containment system requirements of the project.

CCEWOOL® Curtain Wall Insulation Board is a high-performance solution designed for modern curtain wall systems, combining fire protection, thermal insulation, moisture resistance, and durability, providing greater safety and long-lasting protection for buildings.

### **Characteristics:**

Low Moisture Absorption;

Superior Thermal Protection;

Non-Combustible;





Sound Absorption;  
Chemically Inert;  
Water-Resistant;  
Reinforced Foil Facing.

**Applications:**

Exterior Wall Insulation: Curtain walls;  
Thermal and Fire Protection for Building Arches;  
Vertical Frame Cover for Curtain Wall Systems.

**TDS**

<b>CCEWOOL® Curtain Wall Insulation Board 40/80</b>		
Product	Curtainrock 40	Curtainrock 80
Density	4 lbs/ft <sup>3</sup>	8 lbs/ft <sup>3</sup>
Dimensional stability	Curtainrock 40/80 – < 1% @ 1200F	
Thicknesses	1.5", 2", 2.5", 3", 3.5", 4", 4.5", 5", 6", 7"	1.5", 2", 2.5", 3", 3.5", 4", 4.5", 5", 6", 7"
Dimensions	24" x 48" 36" x 60" 48" x 72"	24" x 48" 36" x 60" 48" x 60" 48" x 72" 60" x 72"
Reaction to fire	Class A Non-Combustible Flame spread index = 0 ; Smoke developed index = 0	
Thermal resistance	R4.3 per inch	
Acoustical Performance	NRC = 1.05 (3" thickness)	
Corrosion Resistance	No corrosion	



## CCEWOOL® Rock Wool Board 40



CCEWOOL® Rock Wool Board 40 is a high-performance stone wool insulation board designed for perimeter fire protection systems, floor and wall penetrations, construction joints, and other fire-related applications.

The product is non-combustible and fire-resistant, ensuring that even when exposed to flames, it will not produce toxic smoke or contribute to flame spread,

providing reliable fire protection for buildings. Additionally, its moisture resistance, anti-mold, and non-corrosive properties ensure long-lasting durability, while also reducing noise transmission within and around the building, significantly enhancing comfort in both residential and work environments.

CCEWOOL® Rock Wool Board 40 is the ideal solution for modern building fire and acoustic requirements, suitable for various key areas, providing comprehensive safety and thermal efficiency optimization for buildings.

### **Characteristics:**

Non-Combustible;

Smoke and Flame Spread Resistance;

Dimensional Stability;

Low Thermal Conductivity;

Water and Moisture Resistant;

Corrosion and Mold Resistant.

### **Applications:**

Perimeter Fire Protection Systems;

Fire Insulation for Construction Joints;



Penetration Protection;

Other Fire Protection Applications.

**TDS**

<b>CCEWOOL® Rock Wool Board 40</b>	
Density	4.0 lbs/ft <sup>3</sup> (64 kg/m <sup>3</sup> )
Dimensions	24" x 48" (610 mm x 1219 mm)
Thickness	1.5", 2", 3", 4", 5", 6" - 4" is available with a foil facing
Reaction to fire	Class A Non-Combustible
Reaction to moisture	Moisture Sorption - 0.04%
Corrosion Resistance	No corrosion

**CCEWOOL® Rock Wool Board 45**



CCEWOOL® Rock Wool Board 45 is a high-performance semi-rigid stone wool insulation board specifically designed for concealed spaces in multi-unit residential buildings, providing exceptional fire and sound protection. With its superior fire resistance, ease of installation, and long-term stability, it is the ideal choice for ensuring fire safety in buildings, suitable for various protective needs in

concealed spaces.

CCEWOOL® Rock Wool Board 45 combines fire protection, acoustic performance, moisture resistance, and durability, offering a safe, comfortable, and sustainable high-quality solution for multi-unit residential

buildings.

**Characteristics:**

Easy Installation;

Non-Combustible;

Excellent Sound Absorption;

Mold and Bacteria Resistant;

Water Resistance;

Chemically Inert;

Environmentally Friendly.

**Applications:**

Specifically designed for fire protection in concealed spaces in multi-unit residential buildings.

**TDS**

<b>CCEWOOL® Rock Wool Board 45</b>	
Density	4.4 lb/ft <sup>3</sup> (70 kg/m <sup>3</sup> )
Dimensional stability	Linear Shrinkage - <1% @1200°F
Dimensions	16" x 48" (406 mm x 1219 mm)
	24" x 48" (610 mm x 1219 mm)
Thickness	1"(25.4 mm)
Reaction to fire	Class A Non-Combustible
Thermal resistance	R-value / inch @ 75°F - 4.2 hr.ft <sup>2</sup> .F/Btu RSI value / 25.4 mm @ 24°C - 0.74 m <sup>2</sup> K/W
Reaction to moisture	Moisture Sorption - 0.03%
Corrosion Resistance	No corrosion



## CCEWOOL® Rock Wool Board 55/65



CCEWOOL® Rock Wool Board 55/65 is a medium-density rock wool insulation product, specially designed for external and internal non-load-bearing steel firewalls, providing at least 1 hour of fire protection. CCEWOOL® Rock Wool Board 65 offers a fire rating of 1 hour, while CCEWOOL® Rock Wool Board 55 provides a 2-hour fire rating (measured from the interior side). These two products allow for more flexible

building designs, enabling builders to reduce building spacing and increase usable floor area while still meeting stringent fire and thermal insulation requirements.

CCEWOOL® Rock Wool Board 55/65 offers exceptional fire protection, insulation, and durability, making it an ideal choice for meeting modern building fire protection requirements, while providing more flexible and efficient design solutions for builders.

### **Characteristics:**

Lightweight Design;

Easy Installation;

Zero Clearance Fire Resistance;

Non-Combustible;

Dimensional Stability;

Wide Operating Temperature Range;

Energy Efficiency;

Non-Corrosive;

Mold and Corrosion Resistant.



**Applications:**

Non-load-bearing steel surface firewalls.

**TDS**

<b>CCEWOOL® Rock Wool Board 55/65</b>	
Density	4.5 lb/ft <sup>3</sup> (72 kg/m <sup>3</sup> )
Dimensional stability	Linear Shrinkage - <1% @ 1200°F
Dimensions	24" x 48" (610 mm x 1219 mm)
	31.5" x 48" (800 mm x 1219 mm)
	32" x 48" (813 mm x 1219 mm)
Thickness	4"(101.6 mm)
Reaction to fire	Class A Non-Combustible
Thermal resistance	R-value / inch @ 75°F - 4.2 hr.ft <sup>2</sup> .F/Btu RSI value / 25.4 mm @ 24°C - 0.74 m <sup>2</sup> K/W
Reaction to moisture	Moisture Sorption - 0.04%
Corrosion Resistance	No corrosion

